



# ColdStream<sup>™</sup>PTS

## Plant to Shelf

### End-to-End Cold Chain Visibility Application

Preserving the integrity of perishables remains top-of-mind at every link of the supply chain—farm, distribution, warehouse, retail and consumer—because optimizing product condition will reduce lost revenue caused by shrink. ColdStream PTS manages both detailed transaction data (time, temperature and location) to facilitate accept/reject decisions, as well as provides the ability to efficiently analyze data across hundreds or even thousands of transactions to highlight and address systematic cold chain problems.

#### ColdStream PTS Features

- Wireless, RF-enabled monitoring for reliable data gathering of time, location and condition information
- End-to-end supply chain monitoring that includes loading, staging and storage for a comprehensive view of internal and external processes
- Rules-driven alarming and alerting for addressing temperature anomalies in a timely manner
- Permission-based repository gives individual supply chain partners access to only the information appropriate for their evaluation needs
- Robust analytics engine for an in-depth assessment of weaknesses in cold chain management practices
- Reporting for every level of evaluation: dashboard, transaction detail, and management summary reports

#### Integrated RF-Enabled Solution

ColdStream PTS is a complete cold chain visibility application with three components:

- **TempTale<sup>®</sup> RF-enabled temperature monitoring devices** operating within an RF mesh networking environment for enhanced reliability and availability.
- **Remote Site Server**  
a Windows-based software agent that reads and downloads data, and then forwards that data to a central repository. RSS also conducts SNMP monitoring to ensure the health and readiness of TTRF Gateways and TTRF Repeaters within the network.
- **Cold Chain Visibility Server<sup>SM</sup>**  
a web-based hosted database application for query, reporting and analysis of stored data. The Server enables retailers to share critical data efficiently across their supplier partners—through password-protected, selective access, partners can evaluate the complexities of their unique supply chains. And, in-depth data aggregation reporting enables users to analyze their data and draw conclusions about the efficiencies of their cold chain management processes.



## End-to-End Cold Chain Visibility

Farm



Warehouse



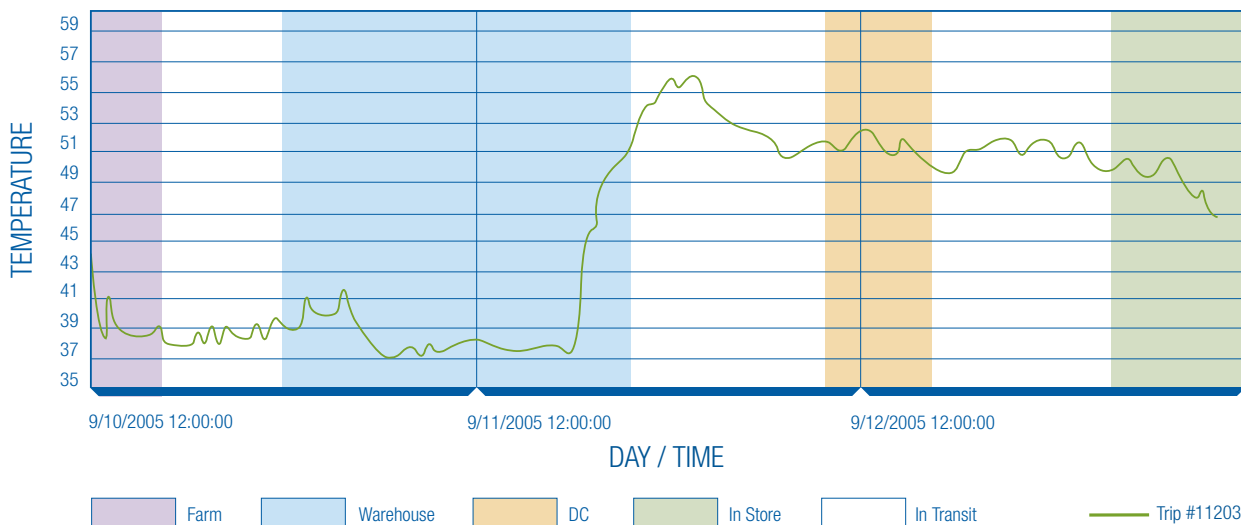
DC



Store



On Display



## Enhanced Process Evaluation

ColdStream PTS gives you the ability to view your cold chain like never before. Whether through simple transaction based queries or in-depth statistical process control charts, Sensitech enables you to ensure the quality and freshness of your perishables by giving you insight into what's really happening throughout the supply chain. ColdStream PTS delivers the reporting and analytics you need to appropriately evaluate the impact of process on your most vulnerable commodities.

Sensitech's Professional Services organization—comprised of food scientists, cold chain experts, industrial engineers and statisticians—is available to help clients further analyze their data and collaborate with their supplier partners to improve processes. Custom programs are designed to identify weaknesses and recommend improvements to our customers' cold chain management techniques beyond the traditional supply chain. Typical areas of analysis include: thermal mappings of trailers and facilities, cold chain audits, and system-wide process evaluations.

Sensitech is the world's leading provider of cold chain visibility solutions that help global leaders in Food and Pharmaceuticals to protect the integrity, freshness and efficacy of their temperature-sensitive products. Sensitech is an ISO 9001:2000 registered company. The company is based in Beverly, Massachusetts, and has offices in Amsterdam, Calgary, Melbourne, Redmond and Santiago with service and distribution offices around the world. For additional information about Sensitech, call 978-927-7003 or visit [www.sensitech.com](http://www.sensitech.com). © Copyright 2005. Sensitech Inc. All Rights Reserved. All trademarks and service marks are the property of Sensitech Inc.